

Applications

- Linearly Polarized High Power Counter Drone Antenna
- Drone Jamming Antenna
- High Power Jamming Antenna
- High Power Communication Antenna
- Designed for High Performance at 200 Watt Continuous Power (%100 duty cycle)
- Vehicle Antenna
- Wideband Monitoring Antenna
- Fixed-Site Antenna

Specifications

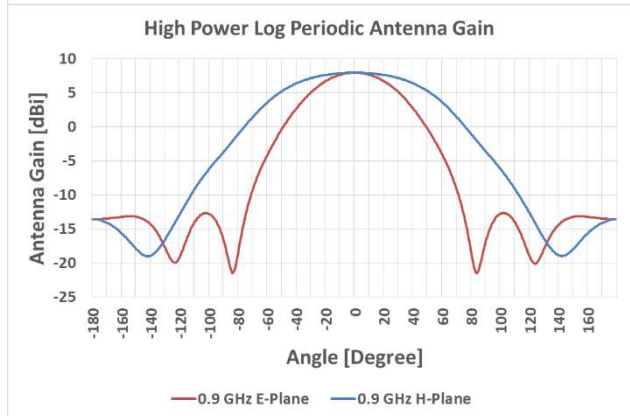
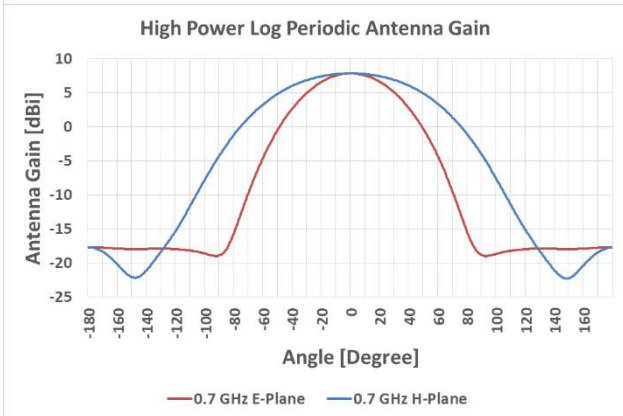
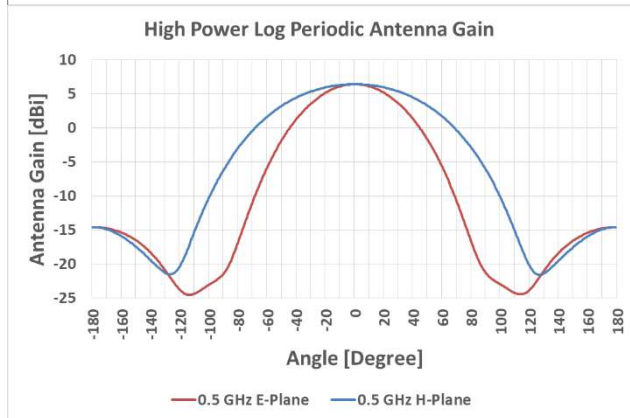
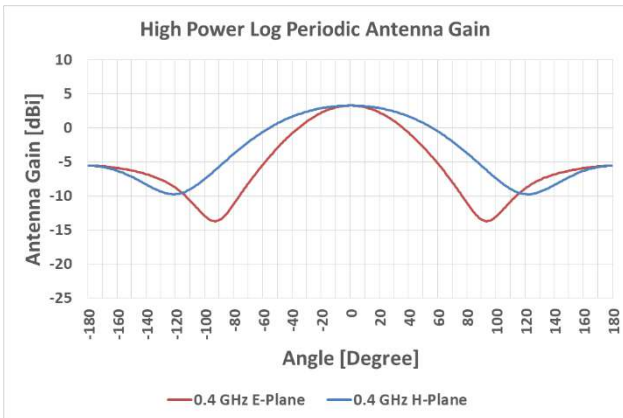
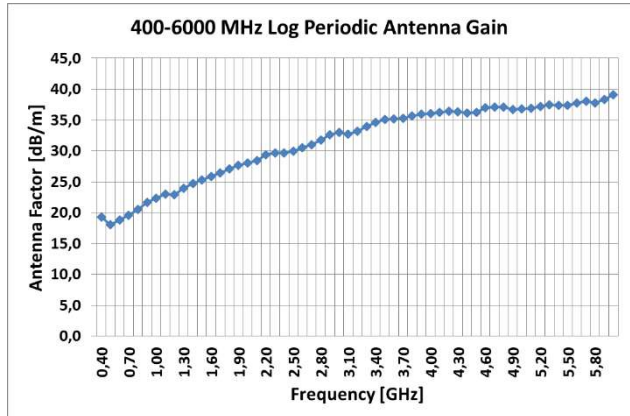
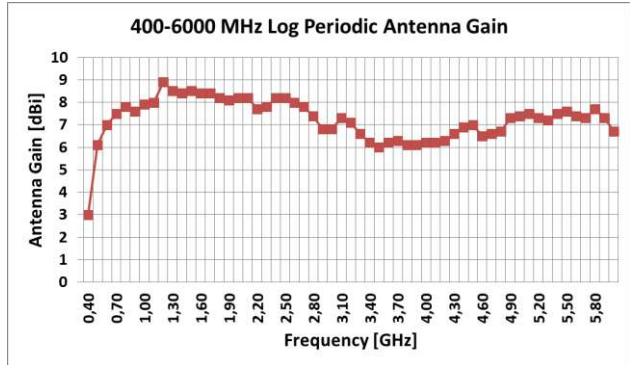
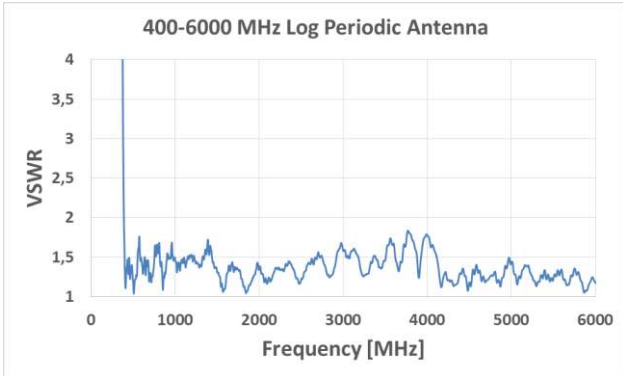
Frequency Band and VSWR	400-6000 MHz \leq 2:1
Nominal Impedance	50 ohm
Power Rating	200 Watt Continuous (Tested)
Antenna Gain	Typically 7 dBi (See antenna gain graph)
Connector	N-Female
Radiation Pattern	Directional
Polarization	Linearly Polarized
Dimensions	530 mm (Length) X 370 mm (Width)
DC Connection	Equipped with a DC short for static and surge protection.



Typical antenna parameters are given in the next pages:

HP-LPDA-4006000

400-6000 MHz High Power Wideband Log Periodic Antenna



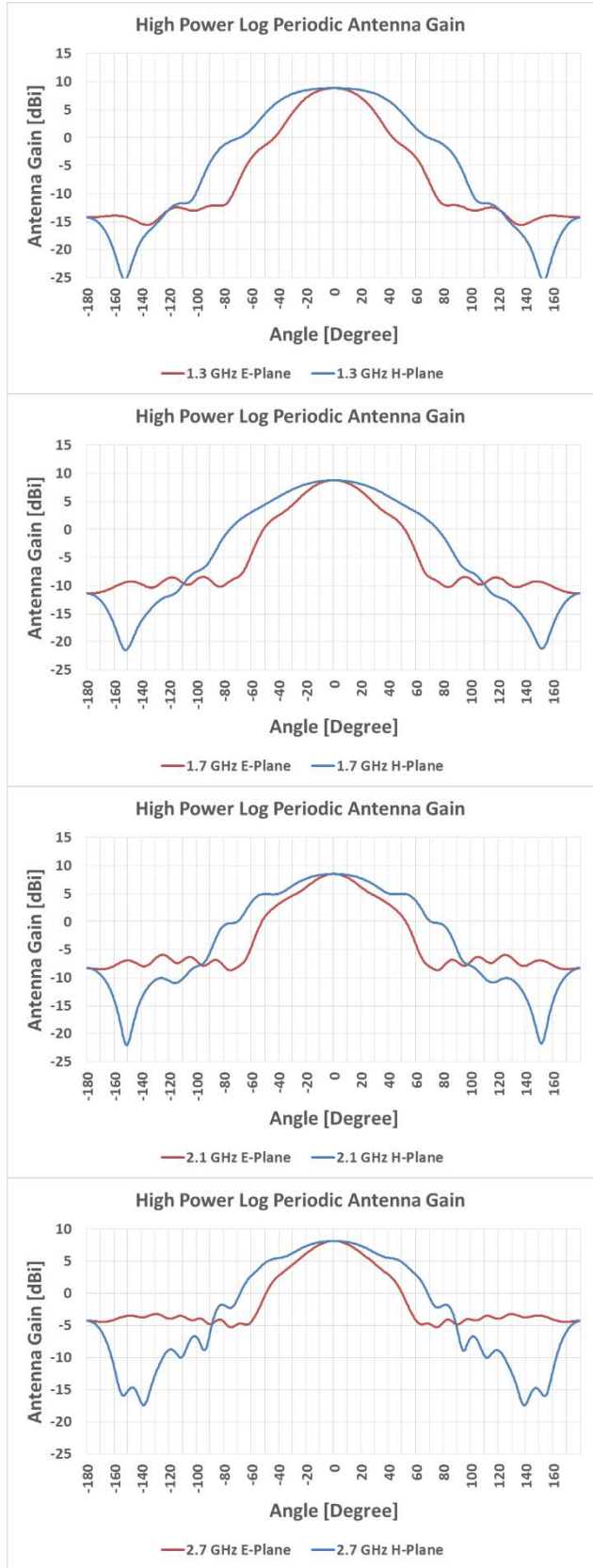
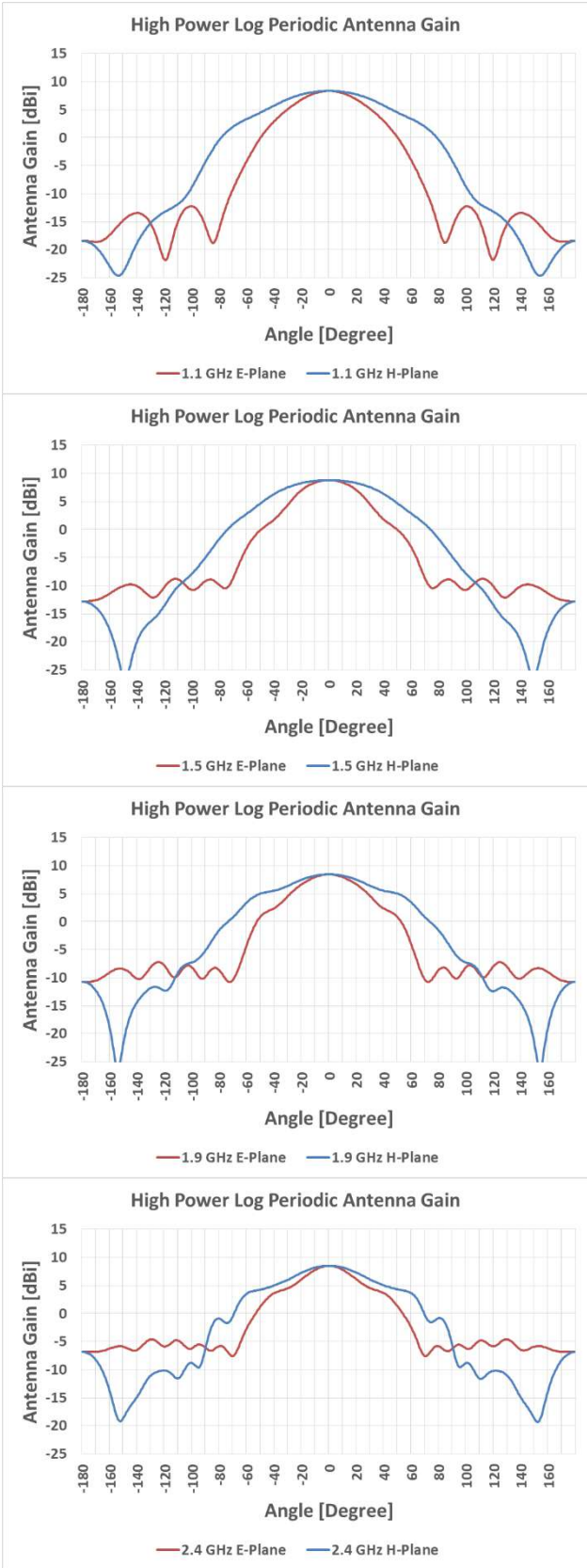


Game-Changing Antenna Technology

HP-LPDA-4006000

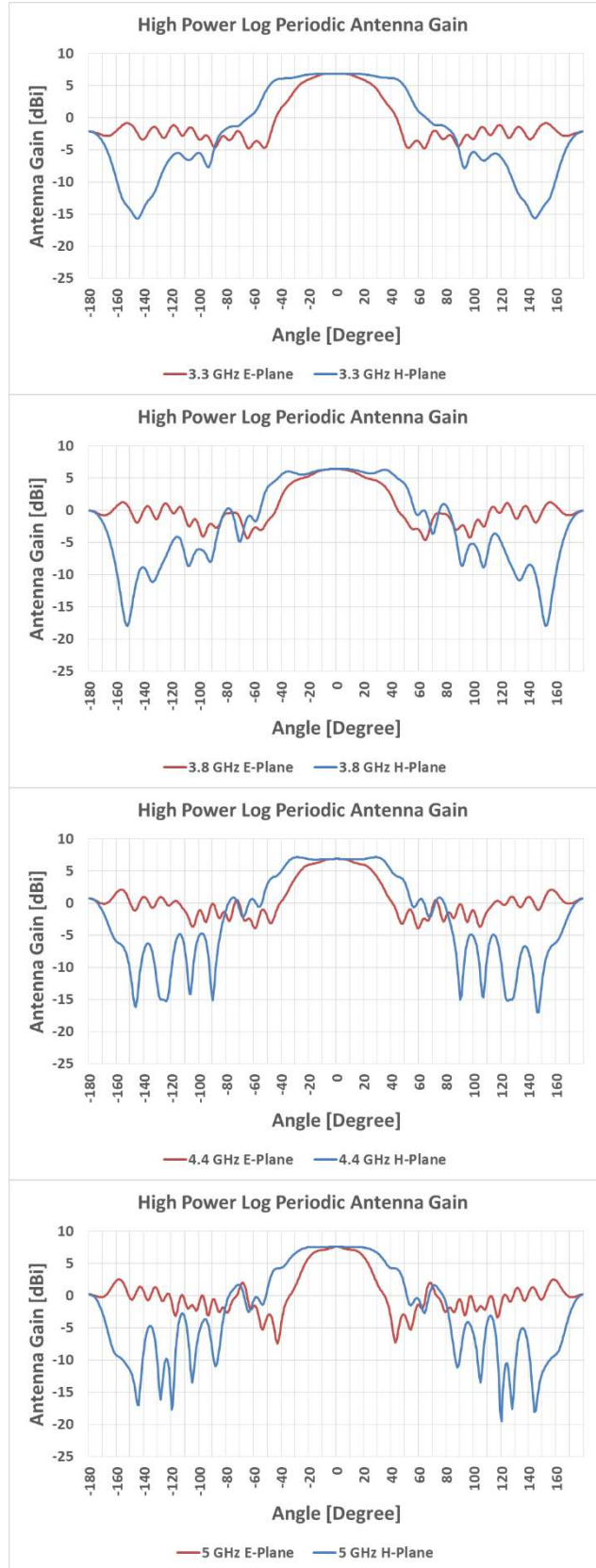
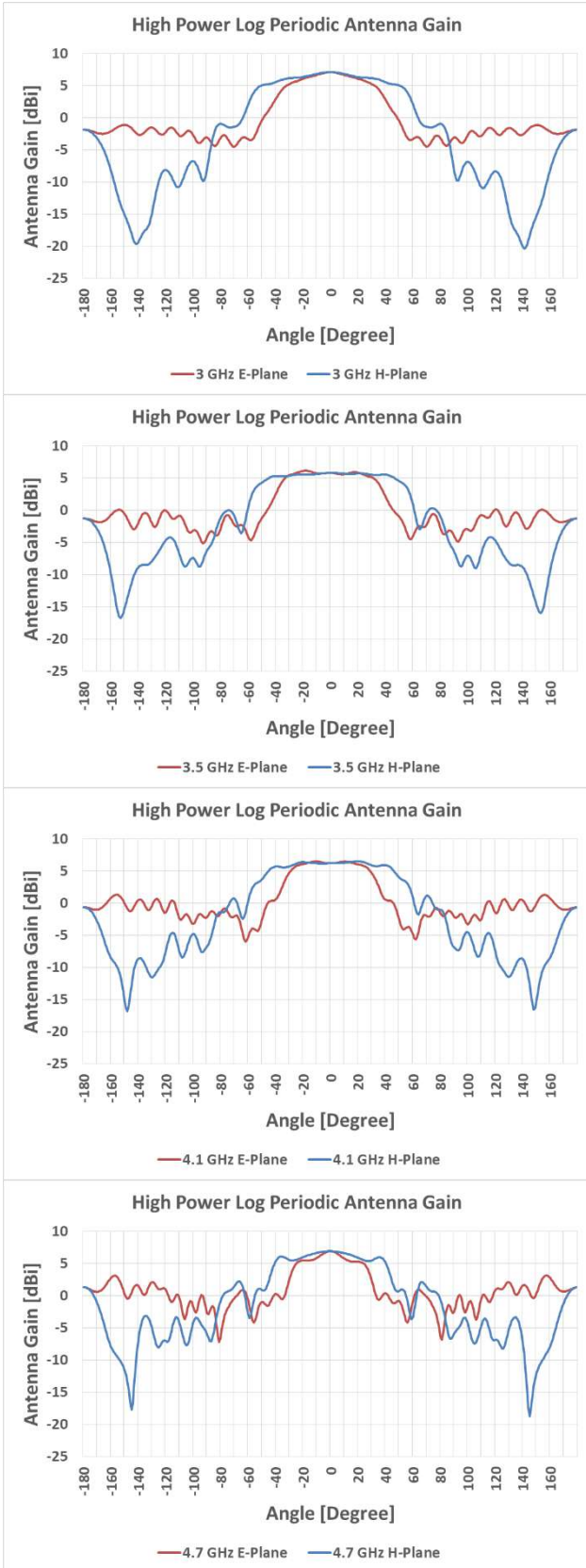
400-6000 MHz High Power

Wideband Log Periodic Antenna



HP-LPDA-4006000

400-6000 MHz High Power Wideband Log Periodic Antenna





Game-Changing Antenna Technology

HP-LPDA-4006000 400-6000 MHz High Power Wideband Log Periodic Antenna

